



REGAL
— STUDENTS —



Jubilee Court

Wincheap, Canterbury, CT1 3FJ

£875 PCM



A contemporary furnished top floor apartment with open plan living space located just a few hundred yards from the City Walls. An open plan lounge/dining room with a juliet balcony window overlooking Wincheap High Street. The kitchen area contains a range of high gloss fitted units including stainless steel sink unit, base and wall cupboards, split level cooker and hob unit, extractor fan, washing machine/dryer and fridge/freezer. A fully tiled luxury shower room offers chrome centrally heated towel rail, wash hand basin and low dual flush WC. Carpeted double bedroom.

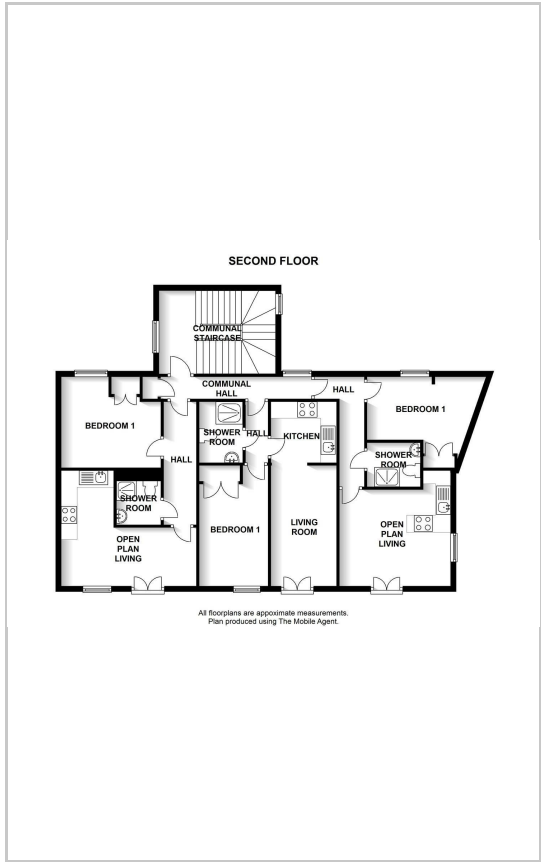
NOTE: 12 Months. Furnished. Council Tax Band B.



Area Map



Floor Plans



Energy Efficiency Graph

Energy Efficiency Rating		
	Current	Potential
<i>Very energy efficient - lower running costs</i>		
(92 plus) A		
(81-91) B		
(69-80) C		
(55-68) D		
(39-54) E		
(21-38) F		
(1-20) G		
<i>Not energy efficient - higher running costs</i>		
England & Wales	EU Directive 2002/91/EC	

These particulars, whilst believed to be accurate are set out as a general outline only for guidance and do not constitute any part of an offer or contract. Intending purchasers should not rely on them as statements of representation of fact, but must satisfy themselves by inspection or otherwise as to their accuracy. No person in this firm's employment has the authority to make or give any representation or warranty in respect of the property.

57 Castle Street, Canterbury, Kent, CT1 2PY
 Tel: 01227 767200 Email: propertymanagement@regal-estates.co.uk